

# ECON [WET-EXT]

## STANDARD SPECIFICATIONS

### HOUSING

Formed aluminum design, welded for stability, and finished in a bronze powder coat.

### DIFFUSER

Injection molded clear prismatic polycarbonate, UV stabilized material that is resistant to damage due to the 0.085" base thickness. Available with a painted bronze cutoff to control light distribution.

### PAN

Cold rolled steel design, finished in a powder coat high reflectance white paint.

### LED PERFORMANCE - 3500K STANDARD

120-277V - 3500K, 82 CRI - L80 rating - 60,000 hrs - L70 rating (projected) - 100,000 hrs  
 Amperage rated @ 110V input  
 Operating ambient temperature: -20°C / -4°F - 40°C / 104°F

Delivered 3500K lumens noted. Consult Brownlee.com for performance of all CCTs.  
 B06 - 6W nominal, .05 A input - 710 lm. Non-dimming.  
 B12 - 12W nominal, .10 A input - 1404 lm. Dimmable (0-10V).  
 C09 - 9W nominal, .10 A input - 990 lm. Dimmable (0-10V).

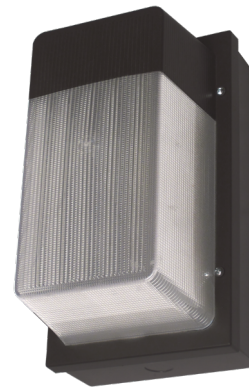
### MOUNTING

Directly to j-box (by others). Mounting hardware included.

### WARRANTY

5 year limited warranty on this LED product. Consult factory for details.

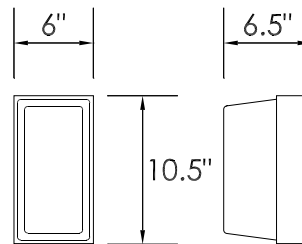
PROJECT:
MODEL #:
FIXTURE TYPE:



EYE diffuser



CLP diffuser



WET



## ORDERING INFORMATION

### 7182

Model                      2.                      3.                      4.                      5. (if required)

#### 2. WATTAGE

- B06**    6W B Series LED
- B12**    12W B Series LED
- C09**    9W C Series LED

#### 3. DIFFUSER

- STANDARD**
- CLP**    Clear Prismatic Polycarbonate
- OPTIONAL**
- EYE**    Clear Prismatic Polycarbonate with Bronze Cutoff

#### 4. COLOR TEMPERATURE

- 35K**    3500K standard color temperature
- 27K**    2700K color temperature
- 30K**    3000K color temperature
- 40K**    4000K color temperature

#### 5. AVAILABLE OPTIONS

- BAC<sup>1</sup>**    Buy American Compliant
- DTR<sup>4</sup>**    Triac (Line Voltage) Dimming (120V) (All except B06)
- ECW<sup>5</sup>**    Extreme Cold Weather (-40°C / -40°F min.)
- ES<sup>6</sup>**    ENERGY STAR®
- FCL<sup>7</sup>**    French Canadian Labels
- PO1**    Photo Control (120V)
- PO2**    Photo Control (208, 240, 277V)
- TMP**    Tamper Resistant Hardware and Tool
- T24<sup>9</sup>**    Title 24 JA8 Compliant (B12 in 3000K only)

**Notes:** (0) 90R - cannot be combined with ES. (1) BAC - cannot be combined with FCL. (2) BBI/BBS/BBC - cannot be combined with ECW, EXT, or T24. (3) BLD - includes integral OCC sensor (do not combine with OCC option). Cannot be combined with DTR or T24. (4) DTR - cannot be combined with BLD or T24. (5) ECW - cannot be combined with BBI, BBC, or DTR. (6) ES - cannot be combined with 90R or T24. (7) FCL - cannot be combined with BAC or T24. (8) OCC - integral ON/OFF occupancy sensor. (9) T24 - includes JA8 labeling and 90 CRI LEDs (do not combine with 90R option). Cannot be combined with BBI, BBC, BBS, BLD, DTR, ES, or FCL. (10) BBS - cannot be combined with BLD, ECW, EXT, OCC, or T24. (11) PCH/PC4 - cannot be combined with BLD or OCC.  
**Add'l Notes:** \*BBI/BBS/BBC - standard BBI (and BBS) option has a minimum operating temperature of 10C/50F. BBC option has a minimum operating temperature of -20C/-4F. \*\*BLD - integral OCC sensor with onboard control. 1: Motion is detected, illuminate to 100%. 2: Motion no longer detected, dim to 50% (factory default), 30%, 20% or 10%. 3: Remain in continuous dimmed state (factory default) or turn off after set period.

### Specifications and dimensions subject to change without notice.

Consult your Brownlee Lighting representative for availability and ordering information.

