

DURABLAST

STANDARD SPECIFICATIONS

HOUSING

Die cast, 0.090" thick housing designed for rugged applications. The housing features a 70 durometer o-ring seal that seats on the edge of the opening against the diffuser.

REFLECTOR

Formed aluminum, secured in position with hardware.

DIFFUSER

Injection molded clear prismatic polycarbonate, UV stabilized material with a base thickness of 0.090" that is resistant to damage.

LED PERFORMANCE - 3500K STANDARD

120-277V - 3500K, 82 CRI - L80 rating - 60,000 hrs - L70 rating (projected) - 100,000 hrs

Amperage rated @ 110V input

Operating ambient temperature: -20°C / -4°F - 40°C / 104°F

Delivered 3500K lumens noted. Consult Brownlee.com for performance of all CCTs.

B12 - 12W nominal, .10 A input - 1407 lm. Dimmable (0-10V).

C09 - 9W nominal, .10 A input - 992 lm. Dimmable (0-10V).

C17 - 16W nominal, .15 A input - 2033 lm. Dimmable (0-10V).

C24 - 23W nominal, .20 A input - 2789 lm. Dimmable (0-10V).

C37 - 35W nominal, .30 A input - 4139 lm. Dimmable (0-10V).

C49 - 45W nominal, .40 A input - 5578 lm. Dimmable (0-10V).

MOUNTING

The 7171 is designed to be installed on either the wall or ceiling and mounted with proper anchors (by others). The housing has removable plugs for conduit entry in the side or rear wire entry from a j-box or conduit.

FINISH

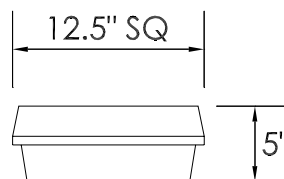
This series is available in a standard bronze polyester powder coat.

WARRANTY

5 year limited warranty on this LED product. Consult factory for details.

ORDERING INFORMATION

PROJECT:
MODEL #:
FIXTURE TYPE:



WET



7171 - - - - -

Model 2. 3. 4. 5. (if required)

2. SIZE

12 12.5" sq.

3. WATTAGE

12 SIZE

B12 12W B Series LED
C09 9W C Series LED
C17 16W C Series LED
C24 23W C Series LED
C37 35W C Series LED
C49 45W C Series LED

4. COLOR TEMPERATURE

35K 3500K standard color temperature
27K 2700K color temperature
30K 3000K color temperature
40K 4000K color temperature

5. AVAILABLE OPTIONS

BAC¹ Buy American Compliant
BLD^{3**} Bi-Level Dimming (All except B06)
DTR⁴ Triac (Line Voltage) Dimming (120V) (All except B06)
ECW⁵ Extreme Cold Weather (-40°C / -40°F min.)
ES⁶ ENERGY STAR®
FCL⁷ French Canadian Labels
OCC⁸ Occupancy Sensor (B12, C17 & C24 only)
PO1 Photo Control (120V)
PO2 Photo Control (208, 240, 277V)
T24⁹ Title 24 JA8 Compliant (B12, C24 & C49 in 3000K only)

Notes: (0) 90R - cannot be combined with ES. (1) BAC - cannot be combined with FCL. (2) BBI/BBS/BBC - cannot be combined with ECW, EXT, or T24. (3) BLD - includes integral OCC sensor (do not combine with OCC option). Cannot be combined with DTR or T24. (4) DTR - cannot be combined with BLD or T24. (5) ECW - cannot be combined with BBI, BBC, or DTR. (6) ES - cannot be combined with 90R or T24. (7) FCL - cannot be combined with BAC or T24. (8) OCC - integral ON/OFF occupancy sensor. (9) T24 - includes JA8 labeling and 90 CRI LEDs (do not combine with 90R option). Cannot be combined with BBI, BBC, BBS, BLD, DTR, ES, or FCL. (10) BBS - cannot be combined with BLD, ECW, EXT, OCC, or T24. (11) PCH/PC4 - cannot be combined with BLD or OCC.
Add'l Notes: *BBI/BBS/BBC - standard BBI (and BBS) option has a minimum operating temperature of 10C/50F. BBC option has a minimum operating temperature of -20C/-4F. **BLD - integral OCC sensor with onboard control. 1: Motion is detected, illuminate to 100%. 2: Motion no longer detected, dim to 50% (factory default), 30%, 20% or 10%. 3: Remain in continuous dimmed state (factory default) or turn off after set period.

Specifications and dimensions subject to change without notice.

Consult your Brownlee Lighting representative for availability and ordering information.