



Wall: 1575D-08" in Black (BL) | Ceiling: 2081-19" in Black (BL)



1575S-46" in Black (BL)

1575 LED

The BRICK-ID (indoor) is a minimal, clean and contemporary interior sconce with exceptional versatility: Four ADA compliant sizes (8", 12", 24" and 46"), dual direction or single direction LED distribution, pull chain availability and a variety of finishes to choose from. Perfect for common areas and corridors in commercial offices, hotels and residential spaces, as well as patient rooms in healthcare facilities. This unit features acrylic top and bottom covers to protect the light source.

FINISHES



BRICK-ID INDOOR

FOR OUTDOOR, REFER TO MODEL #: 7075

STANDARD SPECIFICATIONS - DUAL DIRECTION DISTRIBUTION (1575D)

OUTER FRAME

Formed, cold rolled steel. Outer frame contains no exposed hardware.

DIFFUSER

UV stabilized frosted acrylic top and bottom diffusers.

MOUNT PLATE

Formed, cold rolled steel design, finished with a high reflectance white powder coat.

LED PERFORMANCE - 3500K STANDARD

120-277V - 3500K, L80 rating - 60,000 hrs - L70 rating (projected) - 100,000 hrs

Amperage rated @ 110V input

Operating ambient temperature: -20°C / -4°F - 40°C / 104°F

Delivered 3500K lumens noted. Consult Brownlee.com for performance of all CCTs.

Dual Direction Distribution

B12 - 12W nominal, .10 A input - 945 lm. Dimmable (0-10V). 82 CRI Standard.

C17 - 16W nominal, .15 A input - 1365 lm. Dimmable (0-10V). 82 CRI Standard.

H16 - 16W nominal, .14 A input - 1357 lm. Dimmable (0-10V). 90+ CRI Standard.

H32 - 32W nominal, .26 A input - 3024 lm. Dimmable (0-10V). 90+ CRI Standard.

H63 - 63W nominal, .54 A input - 5945 lm. Dimmable (0-10V). 90+ CRI Standard.

MOUNTING

Fixture is designed to be mounted in the horizontal orientation to a **horizontally positioned single gang 2x4 j-box** (by others). Square cover plate must be ordered separately if mounting to a 4x4 junction box (refer to accessories section - part #: 109832XX). This cover plate will not mount to a vertically positioned single gang 2x4 j-box, contact factory for custom cover plate (custom part #: 100046XX).

FINISH

Brushed Nickel is the standard finish on the 8", 12" and 24" sizes only. The 46" size is available in all Brownlee paint finishes as a standard offering. Installation outdoors voids the Brownlee Limited Warranty.

WARRANTY

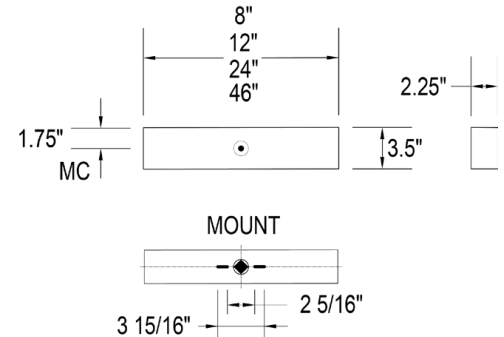
5 year limited warranty on this LED product. Consult factory for details.

ORDERING INFORMATION

PROJECT:

MODEL #:

FIXTURE TYPE:



DAMP



1575D	-	-	-	-	-	-
Model	2.	3.	4.	5.	6.	
2. SIZE	3. FINISH (CONT'D)	4. WATTAGE	5. COLOR TEMPERATURE	6. AVAILABLE OPTIONS		
08 L: 08"	46 SIZE	08 SIZE	35K 3500K color temperature	2CT Dual Independent Circuits (24 & 46 size only)		
12 L: 12"	STANDARD	B12 12W B Series LED	27K 2700K color temperature (B & C Series Only)	90R⁹ 90 CRI (B & C-Series Wattages: 30K only)		
24 L: 24"	BL Black	C17 16W C Series LED	30K 3000K color temperature	AMF Antimicrobial Finish (BL, NT, WH only) (See AMF note)		
46 L: 46"	BZ Bronze		40K 4000K color temperature	BAB¹ Build America, Buy America Compliant (BABAA) (Exclusions: 46 Size - contact factory)		
3. FINISH	GM Gun Metal			BAC¹ Buy American Compliant (BAA)		
08, 12, 24 SIZES	MB Metallic Bronze	H16 16W H Series LED		DTR⁴ Triac (Line Voltage) Dimming (120V)		
STANDARD	MG Metallic Gold	H32 32W H Series LED		FCL⁷ French Canadian Label		
BN Brushed Nickel (8", 12", 24" only)	NT Nickel Tone	H63 63W H Series LED		PCH¹⁰ Pull Chain: On, Off (24 & 46 size only) (120V)		
OPTIONAL	WH White			PC4¹⁰ 4 Position Pull Chain: Uplight & Downlight, Up Only, Down Only, Off (24 & 46 size only) (120V)		
BL Black	ANTIMICROBIAL			T24⁹ Title 24 JA8 Compliant (B12, H16, H32 only) (B12 30K only)		
BZ Bronze	Available in a select number of finishes. Refer to the Options section of this sheet for details ("AMF").					
GM Gun Metal						
MB Metallic Bronze						
MG Metallic Gold						
NT Nickel Tone						
WH White						

2CT Note: For separate control of the uplight and downlight, specify 2CT(Dual Independent Circuits).

AMF Note: Antimicrobial powder coat is applied to the exposed metal fixture parts and can inhibit the growth of mildew and spoilage causing microbes on the finish.

ACCESSORIES (field installed - order separately)

109832BN Cover Plate - Brushed Nickel (Covers 4x4 j-box*)

109832xx Cover Plate - Specify Finish (xx) (Covers 4x4 j-box*)

*Note: This accessory will not mount to a vertically positioned 2x4 j-box (this requires a custom plate - contact factory - custom part #: 100046XX).

Universal Footnotes (only applies if superscript is shown in Options section): (0) 90R - All LEDs/CCTs are being transitioned to 90 CRI standard over 2025. Inquire for this model's availability. (1) BAC/BAB - www.brownlee.com/resources/usa. (2) BBI/BBC - cannot combine with ECW or EXT. (3) BLD - integral microwave motion sensor (step-dim). Cannot combine with DTR. (4) DTR - cannot combine with BLD. (5) ECW - cannot combine with BBI, BBC, or DTR. (7) FCL - cannot combine with BAC. (8) OCC - integral microwave motion sensor (ON/OFF).

(9) T24 - includes JA8 labeling and 90 CRI LEDs. (10) PCH/PC4 - cannot combine with BLD or OCC.

Add'l Notes: *BBI/BBC - BBI minimum operating temp: 10C/50F unless otherwise stated. BBC minimum operating temp: -20C/-4F.

**BLD - integral microwave motion sensor with step-dim control. 1: Motion is detected, illuminate to 100%.

2: Motion no longer detected, dim to set level. 3: Remain in continuous dimmed state or turn off after set period. Config. via onboard dip switches.

Specifications subject to change without notice.



BROWNLEE
LIGHTING

www.brownlee.com

REVISED
2024.12.27

BRICK-ID INDOOR

FOR OUTDOOR, REFER TO MODEL #: 7075

STANDARD SPECIFICATIONS - SINGLE DIRECTION DISTRIBUTION (1575S)

OUTER FRAME

Formed, cold rolled steel. Outer frame contains no exposed hardware.

DIFFUSER

UV stabilized frosted acrylic diffuser.

MOUNT PLATE

Formed, cold rolled steel design, finished with a high reflectance white powder coat.

LED PERFORMANCE - 3500K STANDARD

120-277V - 3500K, L80 rating - 60,000 hrs - L70 rating (projected) - 100,000 hrs

Amperage rated @ 110V input

Operating ambient temperature: -20°C / -4°F - 40°C / 104°F

Delivered 3500K lumens noted. Consult Brownlee.com for performance of all CCTs.

Single Direction Distribution (Direct or Indirect)

B06 - 6W nominal, .05 A input - 524 lm. Non-dimming. 82 CRI Standard.

C09 - 9W nominal, .10 A input - 731 lm. Dimmable (0-10V). 82 CRI Standard.

C13 - 13W nominal, .10 A input - 994 lm. Dimmable (0-10V). 82 CRI Standard.

H08 - 8W nominal, .07 A input - 608 lm. Dimmable (0-10V) 90+ CRI Standard.

H16 - 16W nominal, .14 A input - 1212 lm. Dimmable (0-10V). 90+ CRI Standard.

H32 - 32W nominal, .27 A input - 2965 lm. Dimmable (0-10V). 90+ CRI Standard.

MOUNTING

Fixture is designed to be mounted in the horizontal orientation to a **horizontally positioned single gang 2x4 j-box** (by others). Square cover plate must be ordered separately if mounting to a 4x4 junction box (refer to accessories section - part #: 109832XX). This cover plate will not mount to a vertically positioned single gang 2x4 j-box, contact factory for custom cover plate (custom part #: 100046XX).

FINISH

Brushed Nickel is the standard finish on the 8", 12" and 24" sizes only. The 46" size is available in all Brownlee paint finishes as a standard offering. Installation outdoors voids the Brownlee Limited Warranty.

WARRANTY

5 year limited warranty on this LED product. Consult factory for details.

ORDERING INFORMATION

1575S - Model - 2. - 3. - 4. - 5. - 6.

2. SIZE

08 L: 08"
12 L: 12"
24 L: 24"
46 L: 46"

3. FINISH

08, 12, 24 SIZES

STANDARD

BN Brushed Nickel
(8", 12", 24" only)

OPTIONAL

BL Black
BZ Bronze
GM Gun Metal
MB Metallic Bronze
MG Metallic Gold
NT Nickel Tone
WH White

3. FINISH (CONT'D)

46 SIZE

STANDARD

BL Black
BZ Bronze
GM Gun Metal
MB Metallic Bronze
MG Metallic Gold
NT Nickel Tone
WH White

ANTIMICROBIAL

Available in a select number of finishes. Refer to the Options section of this sheet for details ("AMF").

4. WATTAGE

08 SIZE

B06 6W B Series LED
C09 9W C Series LED
C13 13W C Series LED

12 SIZE

H08 8W H Series LED

24 SIZE

H16 16W H Series LED

46 SIZE

H32 32W H Series LED

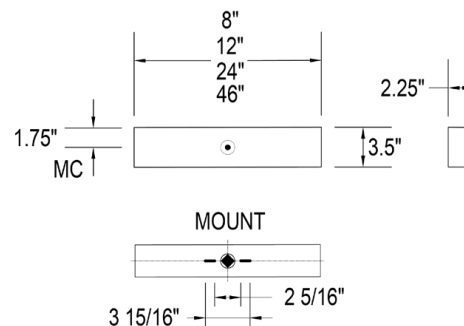
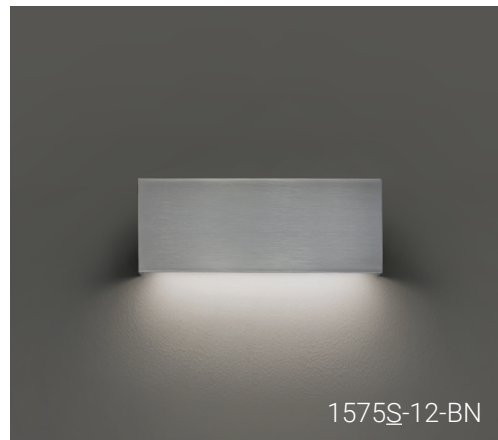
5. COLOR TEMPERATURE

35K 3500K color temperature
27K 2700K color temperature
(B & C Series Only)
30K 3000K color temperature
40K 4000K color temperature

PROJECT:

MODEL #:

FIXTURE TYPE:



DAMP



RoHS
COMPLIANT
ELECTRONICS



6. AVAILABLE OPTIONS

90R⁰ 90 CRI (B & C-Series Wattages: 30K only)
AMF Antimicrobial Finish (BL, NT, WH only) (See AMF note)
BAB¹ Build America, Buy America Compliant (BABAA)
BAC¹ Buy American Compliant (BAA)
DTR⁴ Triac (Line Voltage) Dimming (120V) (All except B06)
FCL⁷ French Canadian Label
PCH¹⁰ Pull Chain: On, Off (24 & 46 size only) (120V)
T24⁹ Title 24 JA8 Compliant (H16 & H32 only)

AMF Note: Antimicrobial powder coat is applied to the exposed metal fixture parts and can inhibit the growth of mildew and spoilage causing microbes on the finish.

ACCESSORIES (field installed - order separately)

109832BN Cover Plate - Brushed Nickel (Covers 4x4 j-box*)
109832xx Cover Plate - Specify Finish (xx)
(Covers 4x4 j-box*)

*Note: This accessory will not mount to a vertically positioned 2x4 j-box (this requires a custom plate - contact factory - custom part #: 100046XX).

Universal Footnotes (only applies if superscript is shown in Options section): (0) **90R** - All LEDs/CCTs are being transitioned to 90 CRI standard over 2025. Inquire for this model's availability. (1) **BAC/BAB** - www.brownlee.com/resources/usa. (2) **BBI/BBC** - cannot combine with ECW or EXT. (3) **BLD** - integral microwave motion sensor (step-dim). Cannot combine with DTR. (4) **DTR** - cannot combine with BLD. (5) **ECW** - cannot combine with BBI, BBC, or DTR. (7) **FCL** - cannot combine with BAC. (8) **OCC** - integral microwave motion sensor (ON/OFF). (9) **T24** - includes JA8 labeling and 90 CRI LEDs. (10) **PCH/PC4** - cannot combine with BLD or OCC.

Add'l Notes: ***BBI/BBC** - BBI minimum operating temp: 10C/50F unless otherwise stated. **BBC** minimum operating temp: -20C/-4F.

***BLD** - integral microwave motion sensor with step-dim control. 1: Motion is detected, illuminate to 100%.

2: Motion no longer detected, dim to set level. 3: Remain in continuous dimmed state or turn off after set period. Config. via onboard dip switches.

Specifications subject to change without notice.

BROWNLEE
LIGHTING
www.brownlee.com

REVISED
2024.12.27