

OPAL [D1-PLATE]

STANDARD SPECIFICATIONS

HOUSING

Cold rolled steel, formed in a die, finished with an electroplated brushed nickel coating that will withstand minor nicks and scratches.

DIFFUSER

Glass cylinder, white finished interior and etched exterior to disguise the light source. The cylinder is bonded with adhesive to a carbon steel threaded ring that screws into the cup holder for a secure installation.

ELECTRICAL

This model is built with two E26 sockets (25W max rated) to accept screw-in LED lamps (lamps provided standard).

Lamp: 10W nominal, 1000 source lm nominal, 3000K, 120V, Dimmable, Type A Lamp Lifetime Rating: 15,000 hours (based on 4 hours per day).

Lamp Certification (if any): Energy Star qualified lamp (fixture has not been Energy Star qualified).

MOUNTING

This series is designed to be mounted directly to a j-box (by others). Mounting hardware included. Can be mounted vertically or horizontally.

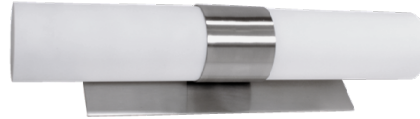
FINISH

The standard finish is a sturdy electroplated brushed nickel. Options include all Brownlee paint finishes. Plated finishes such as Brushed Nickel are suitable for indoor applications only. Installation outdoors voids the Brownlee Limited Warranty.

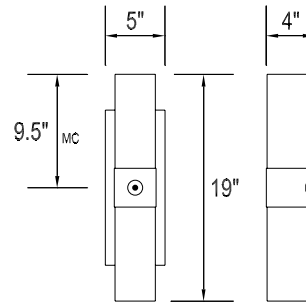
WARRANTY

Fixture parts carry a two year limited warranty against defects in workmanship. The LED lamps carry a one year limited warranty under Brownlee. Lamp claims outside of one year should be addressed with the lamp manufacturer. Contact factory for extended warranty.

PROJECT:
MODEL #:
FIXTURE TYPE:



BN finish



ORDERING INFORMATION



DAMP



ADA

1496 - _____ - _____ - _____
 Model 2. 3. 4.

2. FINISH

STANDARD

BN Brushed Nickel

OPTIONAL

BL Black
BZ Bronze
GM Gun Metal
MB Metallic Bronze
MG Metallic Gold
NT Nickel Tone
PL Platinum
WH White

CUSTOM

Provide color sample or RAL code to match

3. SOCKET TYPE

225N Two 25W Max-Rated E26 Sockets,
LED Lamps Provided, 10W / 1000 source lm nominal / 30K

NOTE: Brownlee has phased out of GU24 technology. Contact factory for availability.

4. AVAILABLE OPTIONS

FCL⁷ French Canadian Labels
LLP Less Lamp (No lamp/bulb provided. Socket only.)

Notes: (0) **90R** - cannot be combined with ES. (1) **BAC** - cannot be combined with FCL. (2) **BBI/BBS/BBC** - cannot be combined with ECW or EXT. (3) **BLD** - includes integral OCC sensor (do not combine with OCC option). Cannot be combined with DTR. (4) **DTR** - cannot be combined with BLD or T24. (5) **ECW** - cannot be combined with BBI, BBC, or DTR. (6) **ES** - cannot be combined with 90R or T24. (7) **FCL** - cannot be combined with BAC. (8) **OCC** - integral ON/OFF occupancy sensor. (9) **T24** - includes JA8 labeling and 90 CRI LEDs (do not combine with 90R option). Cannot be combined with DTR or ES. (10) **BBS** - cannot be combined with BLD, ECW, EXT, or OCC. (11) **PCH/PC4** - cannot be combined with BLD or OCC.
Add'l Notes: ***BBI/BBS/BBC** - standard BBI (and BBS) option has a minimum operating temperature of 10C/50F. BBC option has a minimum operating temperature of -20C/-4F. ****BLD** - integral OCC sensor with onboard control. 1: Motion is detected, illuminate to 100%. 2: Motion no longer detected, dim to 50%, 30%, 20% or 10%. 3: Remain in continuous dimmed state or turn off after set period.

Specifications and dimensions subject to change without notice.
 Consult your Brownlee Lighting representative for availability and ordering information.