

7315

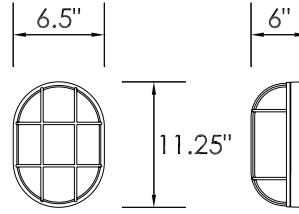


Oval cast aluminum nautical design featuring energy efficient compact fluorescent lamps. Back gasket seals to mounting surface.

PROJECT:
MODEL #:
FIXTURE TYPE:

STANDARD SPECIFICATIONS

- HOUSING:** Die-cast aluminum, white painted finish
DIFFUSER: Frosted ribbed glass with waterproof gasket
BALLAST:
 - 120V NPF Magnetic
 - 120V NPF Electronic
 - 120-277V HPF Electronic**LAMP:**
 - CFL, 2-pin GX23 Base 2700K
 - Quad CFL, 4-pin G24Q Base 2700K
 - Triple CFL, 4-pin GX24Q Base 2700K
 - CFL, GU24 2700K



DISCONTINUED

CHECK FACTORY STOCK

ORDERING INFORMATION

7315 - _____ - _____
 Model 2. 3. (if required)

2. WATTAGE

- | | |
|-------------|-----------------------------|
| 13 | 1-13W CFL, mag. |
| 213 | 2-13W CFL, mag. |
| 13Q | 1-13W Quad CFL, elec. NPF |
| 213Q | 2-13W Quad CFL, elec. NPF |
| 18Q | 1-18W Quad CFL, elec. NPF |
| 218Q | 2-18W Quad CFL, elec. NPF |
| 26Q | 1-26W Quad CFL, elec. NPF |
| 32T | 1-32W Triple CFL, elec. HPF |
| 42T | 1-42W Triple CFL, elec. HPF |
| 13G | 1-13W GU24 CFL, elec. NPF |
| 18G | 1-18W GU24 CFL, elec. NPF |
| 23G | 1-23W GU24 CFL, elec. NPF |

3. AVAILABLE OPTIONS

- BAC** Buy American Compliant
DIM1 Dimming Ballast (120 volt) (Q & T only)
DIM2 Dimming Ballast (277 volt) (Q & T only)
ES3 ENERGY STAR® (elec., NPF) (Q & G only)
ES4 ENERGY STAR® (elec., HPF) (Q only)
PO1 Photo Control (120 volt)
PO2 Photo Control (208,240,277 volt)
T Tamper Resistant Hardware and Tool
UNV 120-277V (50/60 Hz), elec. HPF (Q only)

ACCESSORIES (field installed)

- BBR** Remote Battery Backup (Q & T only)
BBRC Remote Battery Backup, Cold Weather (Q & T only)

Note: BBI and BBR options have an operating temperature of +32°F to +122°F. Cold weather options BBIC and BBRC have an operating temperature of -4°F to +131°F.