

# 5874

## STANDARD SPECIFICATIONS

**DISCONTINUED**  
CHECK FACTORY STOCK

PROJECT:
MODEL #:
FIXTURE TYPE:

### HOUSING

This multiple light source series is constructed from cold rolled steel, and designed for a variety of wall applications.

### DIFFUSER

The simple white glass cylinder is an elegant solution for any decor. The interior of the diffuser is white, with a matte finish exterior.

### ELECTRICAL

GU24 CFL, 2-prong Base 2700K lamp - 120V Electronic NPF Ballast  
GU24 LED, 2-prong Base 3000K lamp - 120V - Lifetime Rating: 25,000 hours

Brownlee Lighting does not recommend GU24 base lamps for 24 hour operation due to lamp manufacturer specifications.

GU24 base compact fluorescent lamps used with an occupancy sensor may result in severely shortened lamp life and/or ballast damage.

### MOUNTING

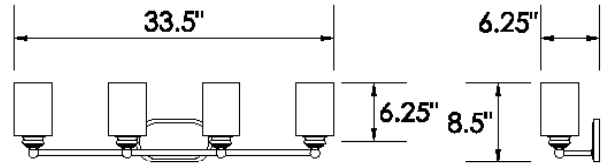
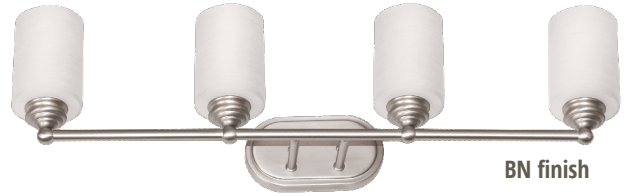
Directly to j-box (by others). Mounting hardware included. The LED version of this fixture is designed to mounted base down only.

### FINISH

The 5874 series is finished in a sturdy brushed nickel plating, and is available in all Brownlee finishes as an option. Plated finishes such as Brushed Nickel are suitable for indoor applications only. Installation outdoors voids the Brownlee Limited Warranty.

### WARRANTY

The housing features a 2 year warranty against a defect in workmanship. The lamps carry a limited warranty and claims of defective products should be addressed with the lamp manufacturer.



### ORDERING INFORMATION



**5874** - \_\_\_\_\_ - \_\_\_\_\_ - \_\_\_\_\_  
 Model                      2.                      3.                      4. (if required)

#### 2. FINISH

##### STANDARD

**BN**      Brushed Nickel

##### OPTIONAL

**BL**      Black  
**BT**      Brass Tone  
**BZ**      Bronze  
**GM**      Gun Metal  
**MB**      Metallic Bronze  
**NT**      Nickel Tone  
**PL**      Platinum  
**WH**      White

##### CUSTOM

Provide color sample or RAL code to match

#### 3. WATTAGE

**G47LED**    4-7W GU24 LED - 1800 lm, 65 lm/W  
**G410LED**   4-10W GU24 LED - 3200 lm, 80 lm/W

**413G**      4-13W GU24 CFL, elec. NPF  
**418G**      4-18W GU24 CFL, elec. NPF

#### 4. AVAILABLE OPTIONS

**BAC**      Buy American Compliant  
**ES**      ENERGY STAR® (G47LED only)