

2144 LED

DISCONTINUED
CHECK FACTORY STOCK

PROJECT:
MODEL #:
FIXTURE TYPE:

STANDARD SPECIFICATIONS

PAN

The classic decorative layered look in a 20 GA cold rolled steel spinning. The three steel stems bend artfully connecting to a decorative canopy.

DIFFUSER

Glass, formed in the classic mellon design with a soft frosted surface that evens the glow of the light. The diffuser is held in place by a cold rolled steel check ring, and a solid brass ball finial.

LED PERFORMANCE - 3500K STANDARD

120-277V - 3500K, 82 CRI - L80 rating - 60,000 hrs - L70 rating (projected) - 100,000 hrs
Amperage rated @ 110V input
Operating ambient temperature: -20°C / -4°F - 40°C / 104°F

Standard 3500K source lumens noted. Consult Brownlee.com for performance of all CCTs.

B12 - 12W nominal, .10 A input - 1430 lm - 123 lm/W. Dimmable (0-10V).

C17 - 16W nominal, .15 A input - 2050 lm - 132 lm/W. Dimmable (0-10V).

C24 - 23W nominal, .20 A input - 2950 lm - 131 lm/W. Dimmable (0-10V).

MOUNTING

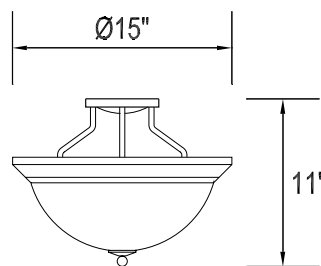
Directly to j-box (by others). Mounting hardware included.

FINISH

The 2144 series is available in all Brownlee paint finishes as a standard offering.

WARRANTY

5 year limited warranty on this LED product. Consult factory for details.



DAMP



ORDERING INFORMATION

2144 -

Model 2. 3. 4. 5. (if required)

2. FINISH

STANDARD

BL Black
BZ Bronze
GM Gun Metal
MB Metallic Bronze
MG Metallic Gold
NT Nickel Tone
PL Platinum
WH White

CUSTOM

Provide color sample or RAL code to match

3. WATTAGE

B12 12W B Series LED
C17 16W C Series LED
C24 23W C Series LED

4. COLOR TEMPERATURE

35K 3500K standard color temperature
27K 2700K color temperature
30K 3000K color temperature
40K 4000K color temperature

5. AVAILABLE OPTIONS

90R⁰ 90 CRI (3000K only)
BAC¹ Buy American Compliant
BLD^{3}** Bi-Level Dimming
DTR⁴ Triac (Line Voltage) Dimming (120V)
ES⁶ ENERGY STAR® (Not available in 90 CRI)
FCL⁷ French Canadian Labels
OCC⁸ Occupancy Sensor
T24⁹ Title 24 Compliant (B12 & C24 in 3000K only)

Notes: (0) **90R** - cannot be combined with ES or T24 (1) **BAC** - cannot be combined with FCL (2) **BBI/BBS/BBC** - cannot be combined with DTR, ECW, EXT, or T24 (3) **BLD** - cannot be combined with DTR, OCC, or T24 (4) **DTR** - cannot be combined with BBI, BBC, BBS, BLD or T24 (5) **ECW** - cannot be combined with BBI, BBC, or DTR (6) **ES** - cannot be combined with 90R, DTR, FCL, or T24 (7) **FCL** - cannot be combined with BAC, ES, or T24 (8) **OCC** - cannot be combined with BLD (9) **T24** - cannot be combined with 90R, BBI, BBC, BBS, BLD, DTR, ES, or FCL (10) **BBS** - cannot be combined with BLD, DTR, ECW, EXT, OCC, or T24 (11) **PCH/PC4** - cannot be combined with BLD or OCC

Add1 Notes: ***BBI/BBS/BBC** - standard BBI (and BBS) option has a minimum operating temperature of 10C/50F. BBC option has a minimum operating temperature of -20C/-4F. ****BLD** - Bi-Level Dimming is field adjustable from 100% to a dimmed light level of 10, 20, 30, or 50%. All units are factory set at 50%.

Specifications and dimensions subject to change without notice.

Consult your Brownlee Lighting representative for availability and ordering information.

