

2140 LED

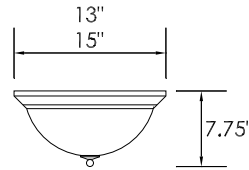


Classic ceiling luminaire with clear ribbed glass diffuser.

PROJECT:
MODEL #:
FIXTURE TYPE:

STANDARD SPECIFICATIONS

PAN: Steel, brass plated, brushed nickel or painted finish
DIFFUSER: Clear ribbed glass



BROWNLEE LED SYSTEM

120V or 277V constant current @ 700mA
 3500K, 80 CRI

10LED 10W - (1) 10W LED board - 740 lumens - 70 lumens per watt
20LED 20W - (2) 10W LED boards - 1480 lumens - 75 lumens per watt
40LED 40W - (4) 10W LED boards - 2960 lumens - 75 lumens per watt

ORDERING INFORMATION

2140 - - - -
 Model 2. 3. 4. 5. (if required)

2. SIZE

13 13" dia.
 15 15" dia.

3. FINISH

STANDARD

BN Brushed Nickel
PB Polished Brass
WH White

OPTIONAL

AG Antique Gold
BL Black
BR Brick
BZ Bronze
CB Crème Brulee
CN Chestnut
DS Desert Stone
GD Gold Dust
GM Gun Metal
IV Ivy
MB Metallic Bronze
NT Nickel Tone
OL Oak Leaf
PL Platinum
RB Rustic Bronze
RC Rustic Copper
RW Rosewood

CUSTOM

Provide color sample
 or RAL code to match

4. WATTAGE

13 SIZE

10LED 1-10W LED board

20LED 2-10W LED boards

15 SIZE

20LED 2-10W LED boards

40LED 4-10W LED boards

5. AVAILABLE OPTIONS

277 277V Driver
BAC Buy American Compliant
BBI Integral Battery Backup
DIM1 Dimming Ballast (120 volt)
DIM2 Dimming Ballast (277 volt)

ACCESSORIES (field installed)

BBR Remote Battery Backup

**Brownlee offers a 3 year limited warranty on all LED products.
 Consult factory for details**

2140

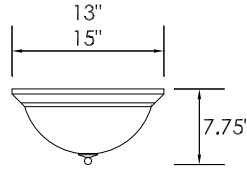


PROJECT:
MODEL #:
FIXTURE TYPE:

Classic ceiling luminaire with clear ribbed glass diffuser.

STANDARD SPECIFICATIONS

- PAN:** Steel, brass plated, brushed nickel or painted finish
DIFFUSER: Clear ribbed glass
BALLAST: • 120V NPF Magnetic
 • 120V NPF Electronic
LAMP: • CFL, 2-pin GX23 Base 2700K
 • Quad CFL, 4-pin G24Q Base 2700K
 • CFL, GU24 2700K



DISCONTINUED

CHECK FACTORY STOCK

ORDERING INFORMATION

2140 - - - - -
 Model 2. 3. 4. 5. (if required)

2. SIZE

- 13 13" dia.
 15 15" dia.

3. FINISH

- STANDARD**
BN Brushed Nickel
PB Polished Brass
WH White
- OPTIONAL**
AG Antique Gold
BL Black
BR Brick
BZ Bronze
CB Crème Brulee
CN Chestnut
DS Desert Stone
GD Gold Dust
GM Gun Metal
IV Ivy
MB Metallic Bronze
NT Nickel Tone
OL Oak Leaf
PL Platinum
RB Rustic Bronze
RC Rustic Copper
RW Rosewood

CUSTOM

Provide color sample or RAL code to match

4. WATTAGE

- 13 SIZE**
13 1-13W CFL, mag.
213 2-13W CFL, mag.
- 13Q** 1-13W Quad CFL, elec. NPF
213Q 2-13W Quad CFL, elec. NPF
18Q 1-18W Quad CFL, elec. NPF
218Q 2-18W Quad CFL, elec. NPF
26Q 1-26W Quad CFL, elec. NPF
- 13G** 1-13W GU24 CFL, elec. NPF
213G 2-13W GU24 CFL, elec. NPF
18G 1-18W GU24 CFL, elec. NPF
218G 2-18W GU24 CFL, elec. NPF
23G 1-23W GU24 CFL, elec. NPF
26G 1-26/27W GU24 CFL, elec. NPF
- 15 SIZE**
213 2-13W CFL, mag.
313 3-13W CFL, mag.
- 213Q** 2-13W Quad CFL, elec. NPF
313Q 3-13W Quad CFL, elec. NPF
218Q 2-18W Quad CFL, elec. NPF
26Q 1-26W Quad CFL, elec. NPF
226Q 2-26W Quad CFL, elec. NPF
- 213G** 2-13W GU24 CFL, elec. NPF
313G 3-13W GU24 CFL, elec. NPF
218G 2-18W GU24 CFL, elec. NPF
23G 1-23W GU24 CFL, elec. NPF
223G 2-23W GU24 CFL, elec. NPF
26G 1-26/27W GU24 CFL, elec. NPF
226G 2-26/27W GU24 CFL, elec. NPF

5. AVAILABLE OPTIONS

- BAC** Buy American Compliant
BBI Integral Battery Backup (Q only in 15 size)
DIM1 Dimming Ballast (120 volt) (Q only)
DIM2 Dimming Ballast (277 volt) (Q only)
ES3 ENERGY STAR® (elec., NPF)
ES4 ENERGY STAR® (elec., HPF) (Q only)
QS Quick Start Lamp (13, 213, 313)
UNV 120-277V (50/60 Hz), elec. HPF (Q only)

ACCESSORIES (field installed)

- BBR** Remote Battery Backup (13, 213, 313 and Q only)
BBRC Remote Battery Backup, Cold Weather (Q only)