

# HANOVER [WHITE]

**DISCONTINUED  
CONTACT FACTORY  
FOR AVAILABLE STOCK**

## STANDARD SPECIFICATIONS

### PAN

The classic decorative layered look in a 20 GA cold rolled steel spinning.

### DIFFUSER

Formed glass, with a white finished interior and an etched outer surface softens the light. The diffuser is held in place by a cold rolled steel check ring, and a solid brass ball finial.

### LED PERFORMANCE - 3500K STANDARD

120-277V - 3500K, 82 CRI - L80 rating - 60,000 hrs - L70 rating (projected) - 100,000 hrs  
Amperage rated @ 110V input  
Operating ambient temperature: -20°C / -4°F - 40°C / 104°F

Delivered 3500K lumens noted. Consult Brownlee.com for performance of all CCTs.  
B12 - 12W nominal, .10 A input - 761 lm. Dimmable (0-10V).

### MOUNTING

Directly to j-box (by others). Mounting hardware included.

### FINISH

The 2125 series is finished in either electroplated brush nickel or high reflectance white powder coat. Also available in all Brownlee paint finishes. Plated finishes such as Brushed Nickel are suitable for indoor applications only. Installation outdoors voids the Brownlee Limited Warranty.

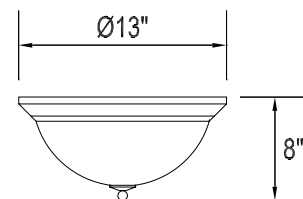
### WARRANTY

5 year limited warranty on this LED product. Consult factory for details.

PROJECT:
MODEL #:
FIXTURE TYPE:



BN finish



DAMP



## ORDERING INFORMATION

**2125** - \_\_\_\_\_  
Model 2. 3. 4. 5. (if required)

### 2. FINISH

**STANDARD**  
**BN** Brushed Nickel

**OPTIONAL**  
**BL** Black  
**BZ** Bronze  
**GM** Gun Metal  
**MB** Metallic Bronze  
**MG** Metallic Gold  
**NT** Nickel Tone  
**PL** Platinum  
**WH** White

**CUSTOM**  
Provide color sample or RAL  
code to match

### 3. WATTAGE

**13 SIZE**  
**B12** 12W B Series LED

### 4. COLOR TEMPERATURE

**35K** 3500K standard color temperature  
**27K** 2700K color temperature  
**30K** 3000K color temperature  
**40K** 4000K color temperature

### 5. AVAILABLE OPTIONS

**90R<sup>0</sup>** 90 CRI (3000K only)  
**BAC<sup>1</sup>** Buy American Compliant  
**DTR<sup>4</sup>** Triac (Line Voltage) Dimming (120V)  
**ES<sup>6</sup>** ENERGY STAR® (Not available in 90 CRI)  
**FCL<sup>7</sup>** French Canadian Labels  
**T24<sup>9</sup>** Title 24 JA8 Compliant (B12 in 3000K only)

**Notes:** (0) **90R** - cannot be combined with ES. (1) **BAC** - cannot be combined with FCL. (2) **BBI/BBB/BBB** - cannot be combined with ECW, EXT, or T24.  
(3) **BLD** - includes integral OCC sensor (do not combine with OCC option). Cannot be combined with DTR or T24. (4) **DTR** - cannot be combined with BLD or T24.  
(5) **ECW** - cannot be combined with BBI, BBC, or DTR. (6) **ES** - cannot be combined with 90R or T24. (7) **FCL** - cannot be combined with BAC or T24.  
(8) **OCC** - integral ON/OFF occupancy sensor. (9) **T24** - includes JA8 labeling and 90 CRI LEDs (do not combine with 90R option). Cannot be combined with BBI,  
BBC, BBS, BLD, DTR, ES, or FCL. (10) **BBS** - cannot be combined with BLD, ECW, EXT, OCC, or T24. (11) **PCH/PC4** - cannot be combined with BLD or OCC.  
**Add'l Notes:** \***BBI/BBB/BBB** - standard BBI (and BBS) option has a minimum operating temperature of 10C/50F. BBC option has a minimum operating  
temperature of -20C/-4F. \*\***BLD** - integral OCC sensor with onboard control. 1: Motion is detected, illuminate to 100%. 2: Motion no longer detected, dim to 50%  
(factory default), 30%, 20% or 10%. 3: Remain in continuous dimmed state (factory default) or turn off after set period.

**Specifications and dimensions subject to change without notice.**

Consult your Brownlee Lighting representative for availability and ordering information.

**BROWNLEE**  
LIGHTING  
www.brownlee.com

REVISED  
2021.12.13