

# VERANDA DISCONTINUED

## STANDARD SPECIFICATIONS

### TRIM

Cold rolled steel, roll formed and assembled with welds, and bolted to the pan. The 0.125" thick bars provide a sturdy seat for the glass diffuser.

### DIFFUSER

Formed glass, with a white finished interior and an etched outer surface softens the light. The diffuser simply slides into position.

### PAN

Die formed, cold rolled steel design. The pan has white glass covers at each end.

### LED PERFORMANCE - 3500K STANDARD

120-277V - 3500K, 82 CRI - L80 rating - 60,000 hrs - L70 rating (projected) - 100,000 hrs

Amperage rated @ 110V input

Operating ambient temperature: -20°C / -4°F - 40°C / 104°F

Delivered 3500K lumens noted. Consult Brownlee.com for performance of all CCTs.

B06 - 6W nominal, .05 A input - 502 lm. Non-dimming.

B12 - 12W nominal, .10 A input - 992 lm. Dimmable (0-10V).

C09 - 9W nominal, .10 A input - 700 lm. Dimmable (0-10V).

### MOUNTING

Directly to j-box (by others). Mounting hardware included.

### FINISH

The 1542 series is finished in nickel tone as a standard offering. Options include all Brownlee paint finishes.

### WARRANTY

5 year limited warranty on this LED product. Consult factory for details.

## ORDERING INFORMATION

**1542** - \_\_\_\_\_  
Model 2. 3. 4. 5. (if required)

### 2. FINISH

**STANDARD**  
**NT** Nickel Tone

**OPTIONAL**  
**BL** Black  
**BZ** Bronze  
**GM** Gun Metal  
**MB** Metallic Bronze  
**MG** Metallic Gold  
**PL** Platinum  
**WH** White

**CUSTOM**  
Provide color sample or RAL code to match

### 3. WATTAGE

**B06** 6W B Series LED  
**B12** 12W B Series LED  
**C09** 9W C Series LED

### 4. COLOR TEMPERATURE

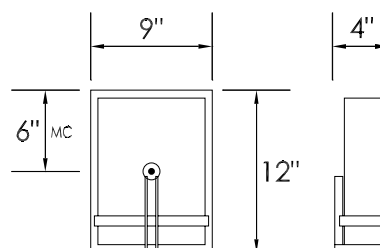
**35K** 3500K standard color temperature  
**27K** 2700K color temperature  
**30K** 3000K color temperature  
**40K** 4000K color temperature

### 5. AVAILABLE OPTIONS

**90R<sup>0</sup>** 90 CRI (3000K only)  
**BAC<sup>1</sup>** Buy American Compliant  
**DTR<sup>4</sup>** Triac (Line Voltage) Dimming (120V) (All except B06)  
**ES<sup>6</sup>** ENERGY STAR® (Not available in 90 CRI)  
**FCL<sup>7</sup>** French Canadian Labels  
**T24<sup>9</sup>** Title 24 JA8 Compliant (B12 in 3000K only)



NT finish



**DAMP**



**Notes:** (0) 90R - cannot be combined with ES. (1) BAC - cannot be combined with FCL. (2) BBI/BBS/BBC - cannot be combined with ECW, EXT, or T24. (3) BLD - includes integral OCC sensor (do not combine with OCC option). Cannot be combined with DTR or T24. (4) DTR - cannot be combined with BLD or T24. (5) ECW - cannot be combined with BBI, BBC, or DTR. (6) ES - cannot be combined with 90R or T24. (7) FCL - cannot be combined with BAC or T24. (8) OCC - integral ON/OFF occupancy sensor. (9) T24 - includes JA8 labeling and 90 CRI LEDs (do not combine with 90R option). Cannot be combined with BBI, BBC, BBS, BLD, DTR, ES, or FCL. (10) BBS - cannot be combined with BLD, ECW, EXT, OCC, or T24. (11) PCH/PC4 - cannot be combined with BLD or OCC. **Add'l Notes:** \*BBI/BBS/BBC - standard BBI (and BBS) option has a minimum operating temperature of 10C/50F. BBC option has a minimum operating temperature of -20C/-4F. \*\*BLD - integral OCC sensor with onboard control. 1: Motion is detected, illuminate to 100%. 2: Motion no longer detected, dim to 50% (factory default), 30%, 20% or 10%. 3: Remain in continuous dimmed state (factory default) or turn off after set period.

**Specifications and dimensions subject to change without notice.**

Consult your Brownlee Lighting representative for availability and ordering information.

