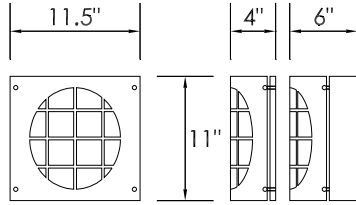


1528

This series infuses classic styles with subtle, contemporary detailing allowing greater interior decorating flexibility.

PROJECT:	
MODEL #:	FIXTURE TYPE:



FASCIA: Steel, painted finish
DIFFUSER: White acrylic
BALLAST: Magnetic (120V) or electronic (120V or 120-277V)
LAMP: Compact fluorescent

DISCONTINUED
 CHECK FACTORY STOCK

GS Finish

1528 - _____ - _____ - _____
 Model 2. 3. 4. (if required)

2. FINISH

STANDARD

- AG** Antique Gold
- BL** Black
- BZ** Bronze
- CB** Creme Brulee
- CN** Chestnut
- DS** Desert Stone
- GD** Gold Dust
- GS** Greystone
- JO** Jade Onyx
- NT** Nickel Tone
- OL** Oak Leaf
- RB** Rustic Bronze
- WH** White

OPTIONAL

- BN** Brushed Nickel

CUSTOM

Provide color sample or RAL code to match

3. WATTAGE

- 13** 1-13W CFL, magnetic
- 213** 2-13W CFL, magnetic
- 18** 1-18W Double CFL, electronic NPF
- 218** 2-18W Double CFL, electronic NPF
- 26** 1-26W Double CFL, electronic NPF
- 226** 2-26W Double CFL, electronic HPF (120-277V)

4. OPTIONS & ACCESSORIES

- BBI** Integral Battery Backup (6" depth)
- ELB-N** Electronic Ballast, NPF (13, 213 watt)
- ELB-H** Electronic Ballast, HPF (13, 213, 18, 218, 26 watt)
- ES3** ENERGY STAR®, Indoor (electronic, NPF) (13, 213, 18, 218, 26 watt)
- ES4** ENERGY STAR®, Indoor (electronic, HPF)
- HPF** High Power Factor Magnetic (13, 213 watt)
- QS** Quick Start Lamp (13, 213 watt)
- 277/HPF** 120-277V, electronic HPF

ACCESSORIES (field installed)

- BBR** Remote Battery Backup

NOTE: Specifications and dimensions subject to change without notice. Consult your Brownlee Lighting representative for availability and ordering information.



4600 Dardanelle Drive • Orlando, FL USA 32808-3832
 Phone: 800.318.6768 • Fax: 800.662.6768 • www.brownlee.com

Rev. 7.21.09