

1230 LED

DISCONTINUED
CHECK FACTORY STOCK

STANDARD SPECIFICATIONS

TRIM

Cold rolled steel, roll formed and assembled with rivets. The three tiered louvered effect results in a soft glow of indirect light.

PAN

Cold rolled steel design, die-formed with mounting pads, and finished with a powder coat high reflectance white paint.

LED PERFORMANCE - 3500K STANDARD

120-277V - 3500K, 82 CRI - L80 rating - 60,000 hrs - L70 rating (projected) - 100,000 hrs
Source lumens noted. Amperage rated @ 110V input
Operating ambient temperature: -20°C / -4°F - 40°C / 104°F

B6LED - 6W nominal, .05 A input - 711 lm - 119 lm/W
B12LED - 12W nominal, .10 A input - 1422 lm - 120 lm/W
C9LED - 9W nominal, .10 A input - 1009 lm - 121 lm/W

MOUNTING

Directly to j-box (by others). Mounting hardware included.

FINISH

The standard finish is a sturdy electroplated brushed nickel. Options include all Brownlee paints. Plated finishes such as Brushed Nickel are suitable for indoor applications only. Installation outdoors voids the Brownlee Limited Warranty.

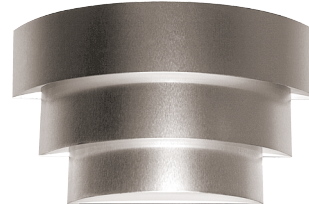
WARRANTY

5 year limited warranty on this LED product. Consult factory for details.

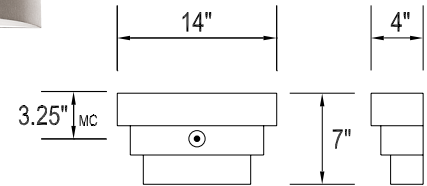
PROJECT:
MODEL #:
FIXTURE TYPE:



BZ finish



NT finish



DAMP



ORDERING INFORMATION

1230 - - - -
Model 2. 3. 4. (if required)

2. FINISH

STANDARD

BN Brushed Nickel

OPTIONAL

AG Antique Gold
BL Black
BR Brick
BZ Bronze
DS Desert Stone
GM Gun Metal
MB Metallic Bronze
NT Nickel Tone
OL Oak Leaf
PL Platinum
RB Rustic Bronze
RC Rustic Copper
WH White

CUSTOM

Provide color sample or RAL code to match

3. WATTAGE

B6LED 1-B Series board
B12LED 2-B Series boards
C9LED 1-C Series board

4. AVAILABLE OPTIONS

27K 2700K color temperature
B6LED - 634 lm - 106 lm/W
B12LED - 1266 lm - 107 lm/W
C9LED - 900 lm - 108 lm/W

30K 3000K color temperature
B6LED - 689 lm - 115 lm/W
B12LED - 1376 lm - 116 lm/W
C9LED - 977 lm - 117 lm/W

40K 4000K color temperature
B6LED - 710 lm - 119 lm/W
B12LED - 1421 lm - 120 lm/W
C9LED - 1010 lm - 121 lm/W

BAC Buy American Compliant

DIM Dimming driver (120-277V)(All except B6LED)
(0-10V dimming control required)

ES ENERGY STAR® (All except B6LED)

Specifications and dimensions subject to change without notice.
Consult your Brownlee Lighting representative for availability and ordering information.

1230

DISCONTINUED

CHECK FACTORY STOCK

STANDARD SPECIFICATIONS

TRIM

Cold rolled steel, roll formed and assembled with rivets. The three tiered louvered effect results in a soft glow of indirect light.

PAN

Cold rolled steel design, die-formed with mounting pads, and finished with a powder coat high reflectance white paint.

ELECTRICAL

CFL, 2-pin GX23 Base 2700K lamp – 120V Magnetic NPF Ballast
Quad CFL, 4-pin G24q Base 2700K lamp – 120-277V Electronic HPF Ballast
GU24 CFL, 2-prong Base 2700K lamp – 120V Electronic NPF Ballast

Brownlee Lighting does not recommend GU24 base lamps for 24 hour operation due to lamp manufacturer specifications.

Fluorescent fixtures utilizing an occupancy sensor should include a programmed start HPF ballast. Fluorescent lamps powered by instant start or rapid start ballasts, or GU24 base compact fluorescent lamps used in this application may result in severely shortened lamp life and/or ballast damage.

MOUNTING

Directly to j-box (by others). Mounting hardware included.

FINISH

The standard finish is a sturdy electroplated brushed nickel. Options include all Brownlee paints. Plated finishes such as Brushed Nickel are suitable for indoor applications only. Installation outdoors voids the Brownlee Limited Warranty.

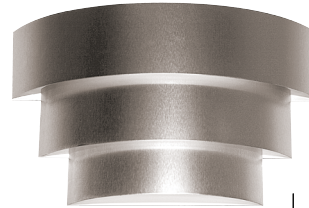
PROJECT:

MODEL #:

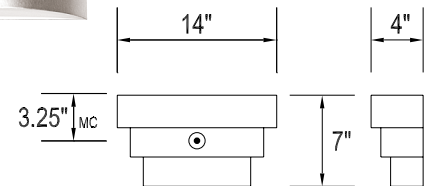
FIXTURE TYPE:



BZ finish



NT finish



DAMP



ORDERING INFORMATION

1230

Model

2.

3.

4. (if required)

2. FINISH

STANDARD

BN Brushed Nickel

OPTIONAL

AG Antique Gold
BL Black
BR Brick
BZ Bronze
DS Desert Stone
GM Gun Metal
MB Metallic Bronze
NT Nickel Tone
OL Oak Leaf
PL Platinum
RB Rustic Bronze
RC Rustic Copper
WH White

CUSTOM

Provide color sample or RAL code to match

3. WATTAGE

13 1-13W CFL, mag.

213 2-13W CFL, mag.

13Q 1-13W Quad CFL, elec. HPF

18Q 1-18W Quad CFL, elec. HPF

26Q 1-26W Quad CFL, elec. HPF

13G 1-13W GU24 CFL, elec. NPF

18G 1-18W GU24 CFL, elec. NPF

4. AVAILABLE OPTIONS

BAC Buy American Compliant

DIM1 Dimming Ballast (120V) (Q only)

DIM2 Dimming Ballast (277V) (Q only)

ES3 ENERGY STAR® (elec., NPF) (G only)

ES4 ENERGY STAR® (elec., HPF) (Q only)

ACCESSORIES (field installed)

BBR¹ Remote Battery Backup (Q only)

1) BBI & BBR options have an operating temperature of +32°F to +122°F. BBIC & BBRC options have an operating temperature of -4°F to +131°F. BBR & BBRC are field installed options available on all HPF fluorescent (CFL & T8) fixtures, except those with dimming ballasts. The maximum distance between the battery and the fixture is 10' for HPF ballasts.

Specifications and dimensions subject to change without notice.

Consult your Brownlee Lighting representative for availability and ordering information.