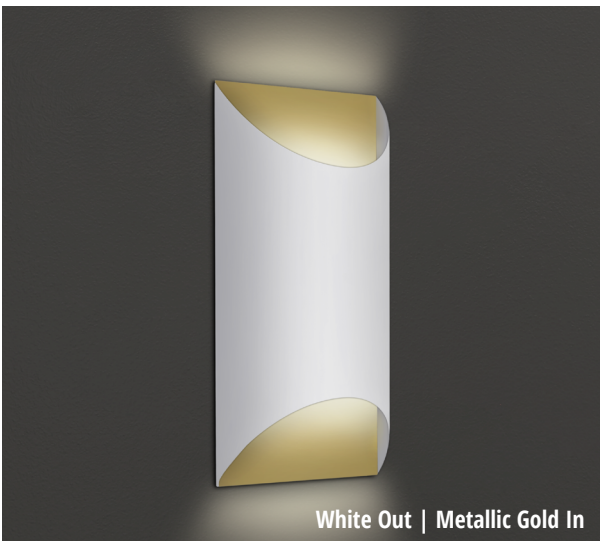


Black Out | Metallic Gold In



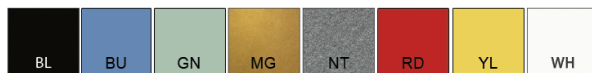
White Out | Metallic Gold In

1572 LED

The 1572 LED features a smooth arced profile with vertically mirrored bows which produce a symmetrical LED wall wash. Perfect for common areas and corridors in commercial offices, hotels and residential spaces. This unit features acrylic top and bottom covers to protect the light source.

Refer to model #: 2080 LED and 2680 LED for coordinating ceiling series.

FINISHES



BOW

STANDARD SPECIFICATIONS

FRAME + BACKPLATE

Formed, cold rolled steel. Outer frame contains no exposed hardware. Slim 3.5" projection from wall.

DIFFUSER

UV stabilized acrylic top and bottom diffusers.

LED PERFORMANCE - 3500K STANDARD

120-277V - 3500K, 82 CRI - L80 rating - 60,000 hrs - L70 rating (projected) - 100,000 hrs

Amperage rated @ 110V input

Operating ambient temperature: -20°C / -4°F - 40°C / 104°F

Delivered 3500K lumens noted. Consult Brownlee.com for performance of all CCTs.

Dual Direction Distribution

B12 - 12W nominal, .10 A input - 534 lm. Dimmable (0-10V).

MOUNTING

Fixture mounts directly to j-box (by others).

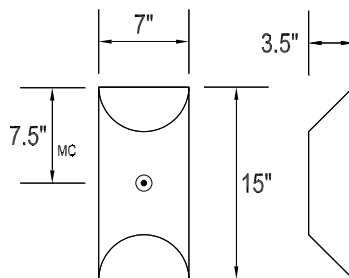
FINISH

The 1572 frame and backplate are offered in a variety of powder coat finishes.

Installation outdoors voids the Brownlee Limited Warranty.

WARRANTY

5 year limited warranty on this LED product. Consult factory for details.



White Out | Nickel Tone In



DAMP



ORDERING INFORMATION

1572

Model

2.

3.

4.

5.

6.

2. OUTER FINISH

BL	Black
BU	Pastel Blue
GN	Pastel Green
MG	Metallic Gold
NT	Nickel Tone
RD	Red
WH	White
YL	Yellow

CUSTOM

Provide color sample or RAL code to match

Note: Brushed Nickel (BN) is no longer a standard offering on this model. Contact factory for availability.

3. WATTAGE

B12 12W B Series LED

4. INNER FINISH

BL	Black
BU	Pastel Blue
GN	Pastel Green
MG	Metallic Gold
NT	Nickel Tone
RD	Red
WH	White
YL	Yellow

5. COLOR TEMPERATURE

35K	3500K standard color temperature
27K	2700K color temperature
30K	3000K color temperature
40K	4000K color temperature

6. AVAILABLE OPTIONS

90R⁰	90 CRI (3000K only)
BAC¹	Buy American Compliant
DTR⁴	Triac (Line Voltage) Dimming (120V)
ES⁶	ENERGY STAR® (Not available in 90 CRI)
FCL⁷	French Canadian Label
T24⁹	Title 24 JA8 Compliant (B12 in 3000K only)

Notes: (0) **90R** - cannot be combined with ES. (1) **BAC** - cannot be combined with FCL. (2) **BBI/BBS/BBC** - cannot be combined with ECW, EXT, or T24. (3) **BLD** - includes integral OCC sensor (do not combine with OCC option). Cannot be combined with DTR or T24. (4) **DTR** - cannot be combined with BLD or T24. (5) **ECW** - cannot be combined with BBI, BBC, or DTR. (6) **ES** - cannot be combined with 90R or T24. (7) **FCL** - cannot be combined with BAC or T24. (8) **OCC** - integral ON/OFF occupancy sensor. (9) **T24** - includes JA8 labeling and 90 CRI LEDs (do not combine with 90R option). Cannot be combined with BBI, BBC, BBS, BLD, DTR, ES, or FCL. (10) **BBS** - cannot be combined with BLD, ECW, EXT, OCC, or T24. (11) **PCH/PC4** - cannot be combined with BLD or OCC. **Add'l Notes:** ***BBI/BBS/BBC** - standard BBI (and BBS) option has a minimum operating temperature of 10C/50F. BBC option has a minimum operating temperature of -20C/-4F. ****BLD** - integral OCC sensor with onboard control. 1: Motion is detected, illuminate to 100%. 2: Motion no longer detected, dim to 50% (factory default), 30%, 20% or 10%. 3: Remain in continuous dimmed state (factory default) or turn off after set period.

Specifications and dimensions subject to change without notice.

Consult your Brownlee Lighting representative for availability and ordering information.